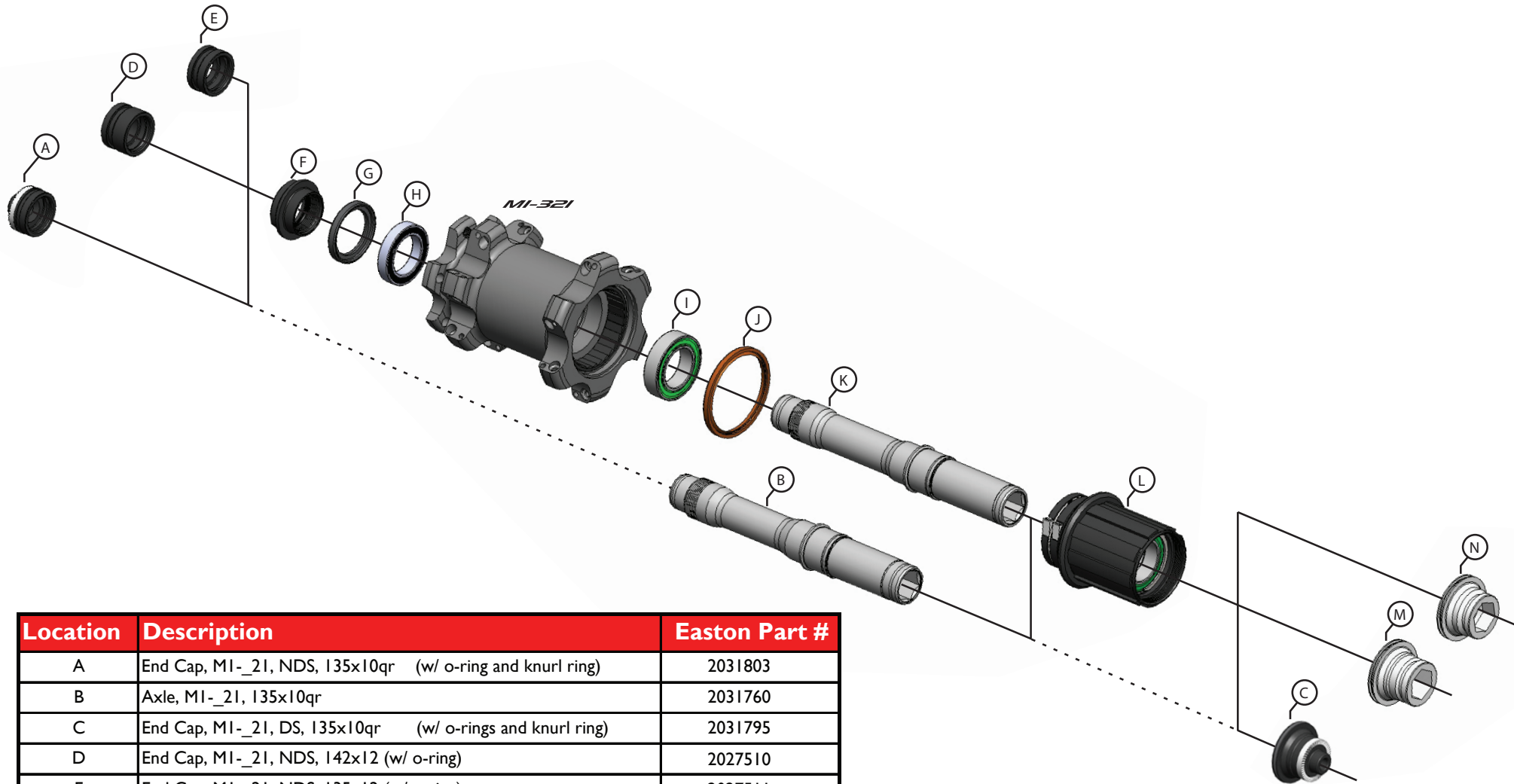


Hub MI - 32I Havoc Rear; 10x135QR, 12x142/135



Location	Description	Easton Part #
A	End Cap, MI-_21, NDS, 135x10qr (w/ o-ring and knurl ring)	2031803
B	Axle, MI-_21, 135x10qr	2031760
C	End Cap, MI-_21, DS, 135x10qr (w/ o-rings and knurl ring)	2031795
D	End Cap, MI-_21, NDS, 142x12 (w/ o-ring)	2027510
E	End Cap, MI-_21, NDS, 135x12 (w/ o-ring)	2027511
F	Adjuster, MI-_21 (w o-ring)	2031790
G	Seal, for 6803 bearing location NDS	2031853
H	Bearing - 6803 MTN Hybrid (NDS & Cass body)	2031763
I	Bearing - 17287 MTN Hybrid (DS)	2031771
J	Seal - Cassette Body (Red)	2014361
K	Axle, MI-_21, 142/135x12mm	2031758
L	Cassette Body MI	2016051
M	End Cap, MI-_21, DS, 142x12 (w/ o-rings)	2031797
N	End Cap, MI-_21, DS, 135x12 (w/ o-rings)	2031796